

Product Name

Metalprep Interior/ Exterior Enamel Primer

Product Description

Metalprep Interior/ Exterior Enamel Primer is a premium quality alkyd based zinc phosphate primer formulated for all ferrous metals. The primer has very good anti-corrosive properties and excellent adhesion to metal surfaces.



Product benefit

- Anti- Rust Formula
- Very good intercoat adhesion
- Ideal primer for bare iron

Product features

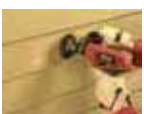
Washability	Medium
Available Packs	1 Lit, 4 Lit, 10 Lit, 20 Lit
Sheen Variants	Flat
Coverage	Coverage - 12-14 Sqm/lit/coat* *Actual coverage may vary from the quoted coverage due to factors such as method and condition of application and surface roughness and porosity.
Colour Options	Grey and Red Oxide

Areas of Application

The areas of application are all common metal surfaces except zinc, galvanised iron and aluminium. Can also be used for coating on automotive chassis.

How to Apply

Pre Painting Steps



Remove all rust and any loose flaking paint by wire brush, disc sander or abrasive blasting to expose a clean metal surface.

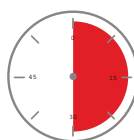


Ensure the surface is free from oil, grease and other contaminants by cleaning with white spirit. Allow the surface to dry completely. Apply uniformly a coat of Metalprep Interior/ Exterior Enamel Primer.

Paint Application / System

- Stir the contents thoroughly before and during use. Apply uniformly direct from the container after proper surface preparation. For best results apply two coats of primer.
- For bare steel in good condition, apply one coat of Metalprep Interior/Exterior Enamel Primer followed by two coats of Metaltough Interior/Exterior Gloss Enamel or Endure Interior/Exterior Gloss Enamel.
- For bare steel in poor condition, remove rust and clean surface. Apply one coat of Metalprep Interior/Exterior Enamel Primer. Finish with two coats of Metaltough Interior/Exterior Gloss Enamel or Endure Interior/Exterior Gloss Enamel.

Drying Time



Touch Dry	4hrs
Recoating Time	16hrs

Finish - Type / Category


Premium Metal Primer.

Additional Information

Gloss level @ 60°	Flat
Method of application	Brush, roller or spray. Please use the method best suited to your requirement and skill. Use of a synthetic or mohair sleeve of 5-10 mm is recommended on a flat surface. For airless spray application, optimum pressure of 2200 psi and nozzle size of 0.011-0.013 inches is suggested as a guideline.
Flammability	Highly flammable, UN 1263, PG III
Safety Precautions	<ul style="list-style-type: none">• Do not apply when surface temperature is below 10°C.• Provide adequate ventilation during use.• Keep out of reach of children.• Check cross cut adhesion of old paint before repainting.• Under normal conditions a week's curing is required to develop full hardness & resistant properties.

DISCLAIMER:

Although the facts and suggestions in this publication are based on our own research and are believed reliable, we cannot assume any responsibility for performance or results obtained through the use of our products herein described, nor do we accept any liability for loss or damages directly caused by our products. The user is held to check the quality, safety and all other properties of our product prior to use. Nothing herein is to be taken as permission, inducement or recommendation to practice any patented invention without a license.

 BRILLIANT PAINTS, BRILLIANT COLOURS (Division of Asian Paints (SP) Limited)	FACTORY: P.O. Box 694, Lautoka, FIJI. Ph: 679 6662799; Fax: 679 - 6663959 Email: contact.fiji@apcocoatings.com	SUVA OFFICE: P.O. Box 4202, Samabula, Suva, FIJI. Ph : (679) 3371267/68; Fax: (679) 3371269 Email: contact.fiji@apcocoatings.com
--	--	--